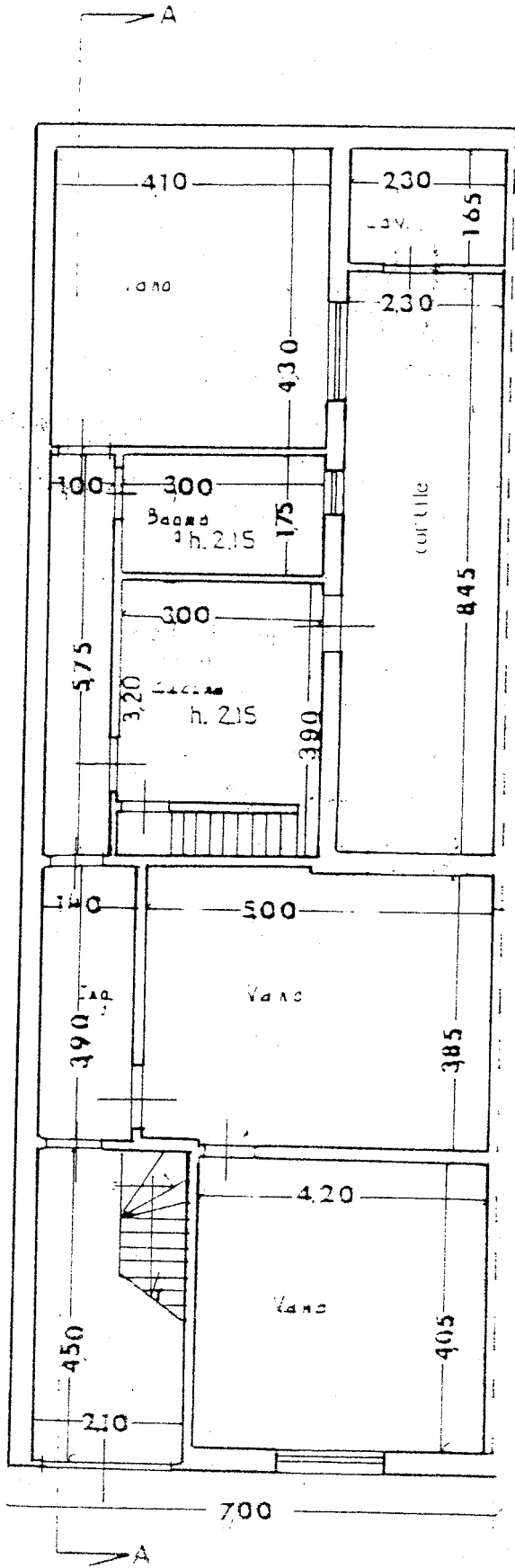


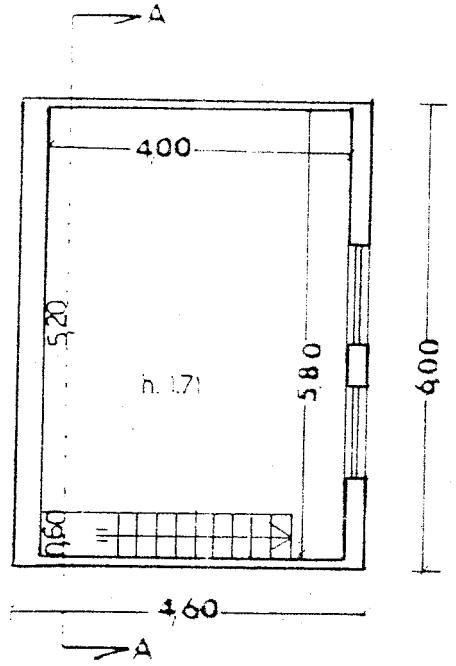
PIANTA PIANO TERRA

H. m. 4.25

DIS. SCALA 1:100



PIANTA PIANO AMMEZZATO



Sub. ecc.

$1840 \times 700 = \text{mq. } 12880$

al cortile e cortile

$845 \times 2140 = \text{mq. } 18083$

restano mq. 1552

Volume a locco

$\text{mq. } 1552 \times 425 = \text{mq. } 659$